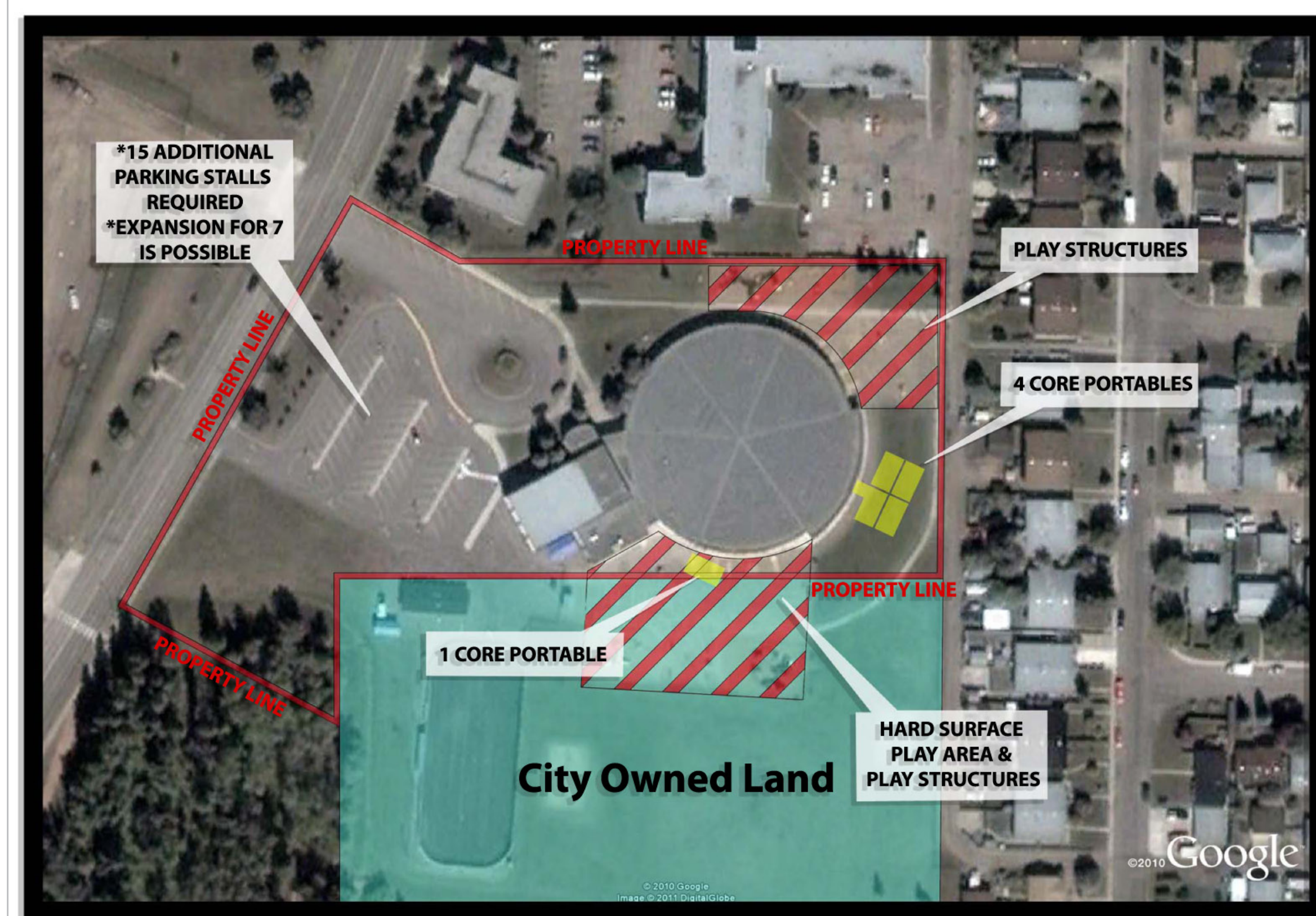


# SYSTEM REVIEW

## Spruce Grove Zone - Brookwood School

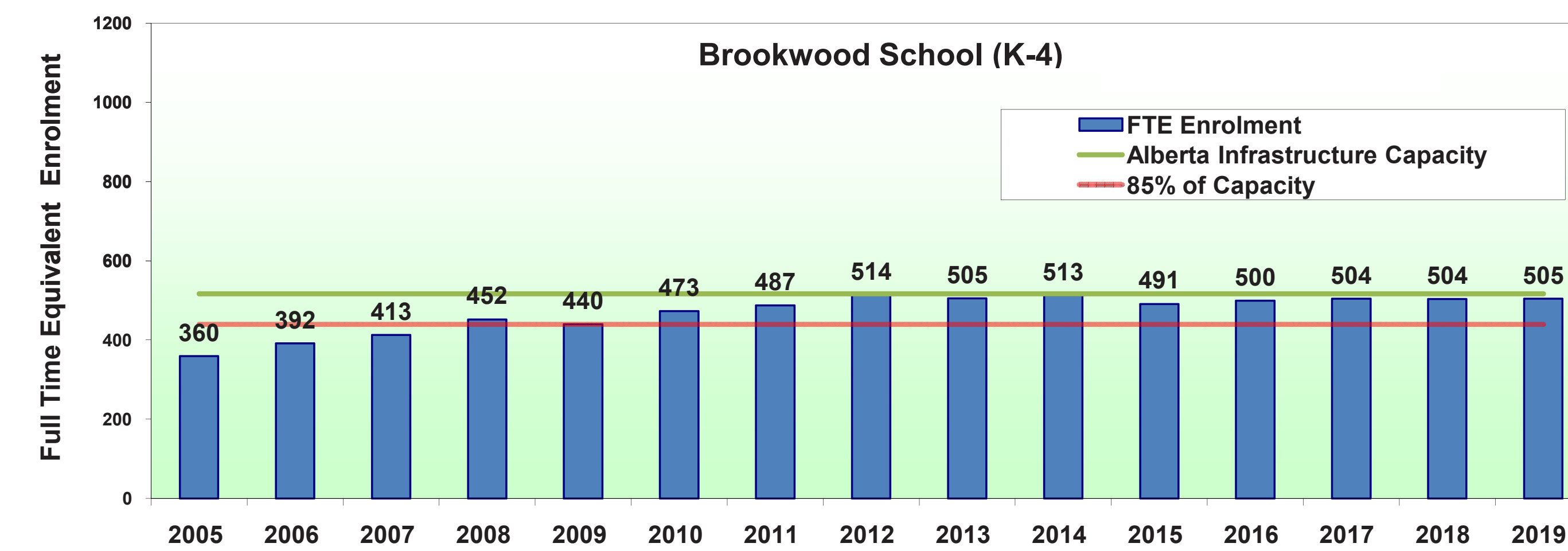


**5 Core Portables**  
**Constraint**  
 - Number of existing washroom fixtures  
**Consequence of Expansion**  
 - Gymnasium is undersized for school population

North  
**Brookwood School**

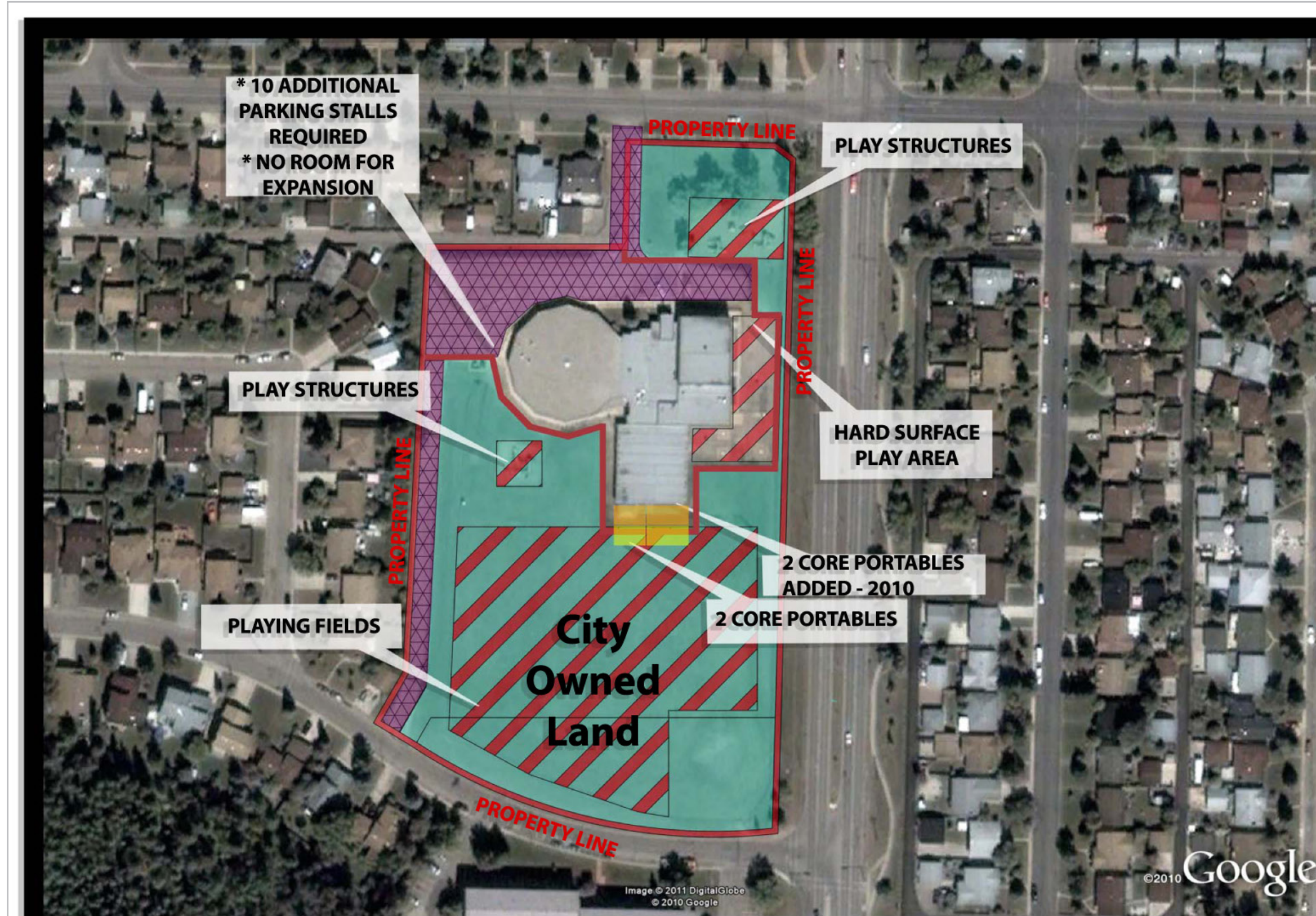
## Spruce Grove Zone - Brookwood School

GRADE	2005	2006	2007	2008	2009	2010	2011	2012	2013	2014	2015	2016	2017	2018	2019
FTE Enrolment	360	392	413	452	440	473	487	514	505	513	491	500	504	504	505
Net Capacity	517	517	517	517	517	517	517	517	517	517	517	517	517	517	517
85% Capacity	439	439	439	439	439	439	439	439	439	439	439	439	439	439	439



Notes:  
 - Enrolment projections March 2010 updated with September 30, 2010 cohort movement  
 - Capacity includes December 2010 core portable movements  
 - Capacity explanation in handout

## Spruce Grove Zone - Millgrove School

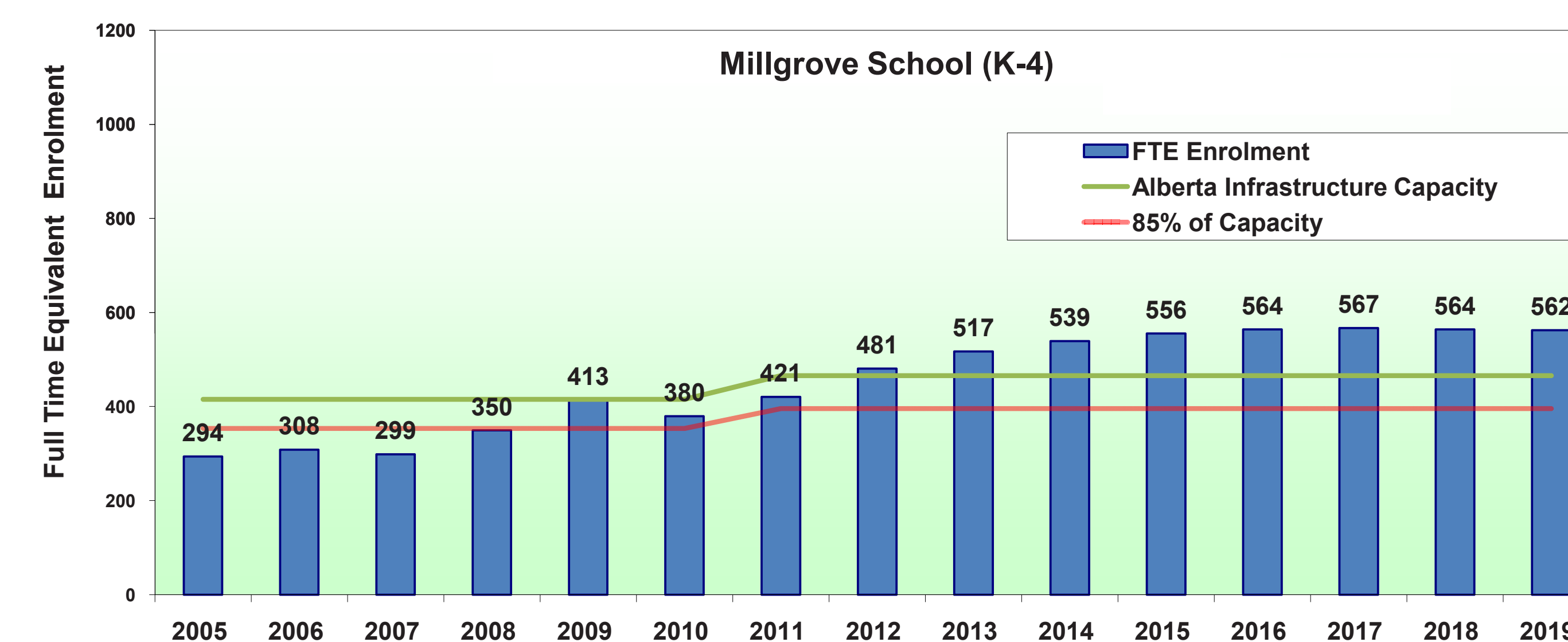


**2 Core Portables**  
**Constraint**  
 - Physical area of the site has been filled

North  
**Millgrove School**

## Spruce Grove Zone - Millgrove School

GRADE	2005	2006	2007	2008	2009	2010	2011	2012	2013	2014	2015	2016	2017	2018	2019
FTE Enrolment	294	308	299	350	413	380	421	481	517	539	556	564	567	564	562
Net Capacity	416	416	416	416	416	416	466	466	466	466	466	466	466	466	466
85% Capacity	353	353	353	353	353	353	396	396	396	396	396	396	396	396	396



Notes:  
 - Enrolment projections March 2010 updated with September 30, 2010 cohort movement  
 - Capacity includes December 2010 core portable movements  
 - Capacity explanation in handout