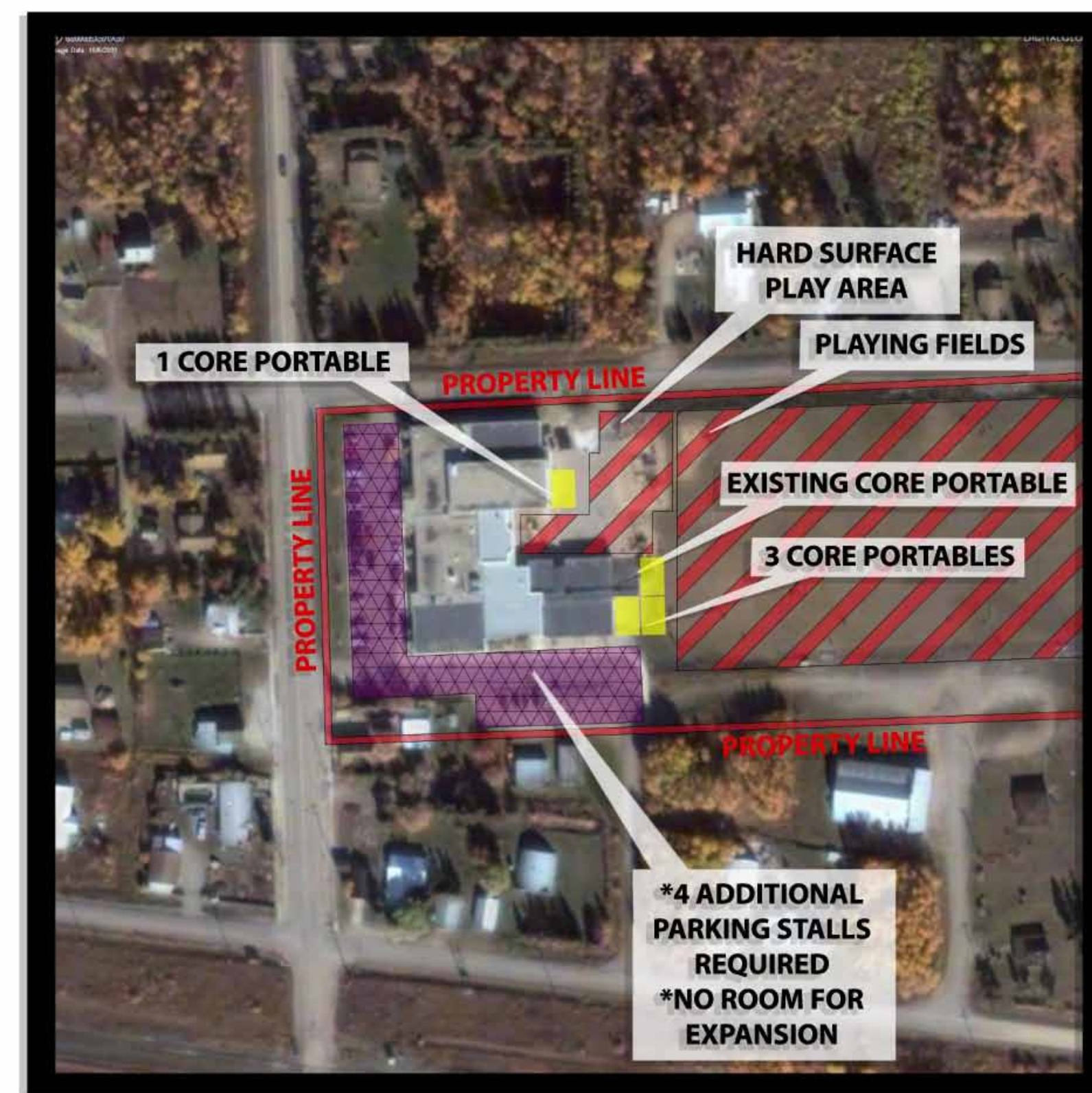


SYSTEM REVIEW

West Parkland Zone - Duffield School



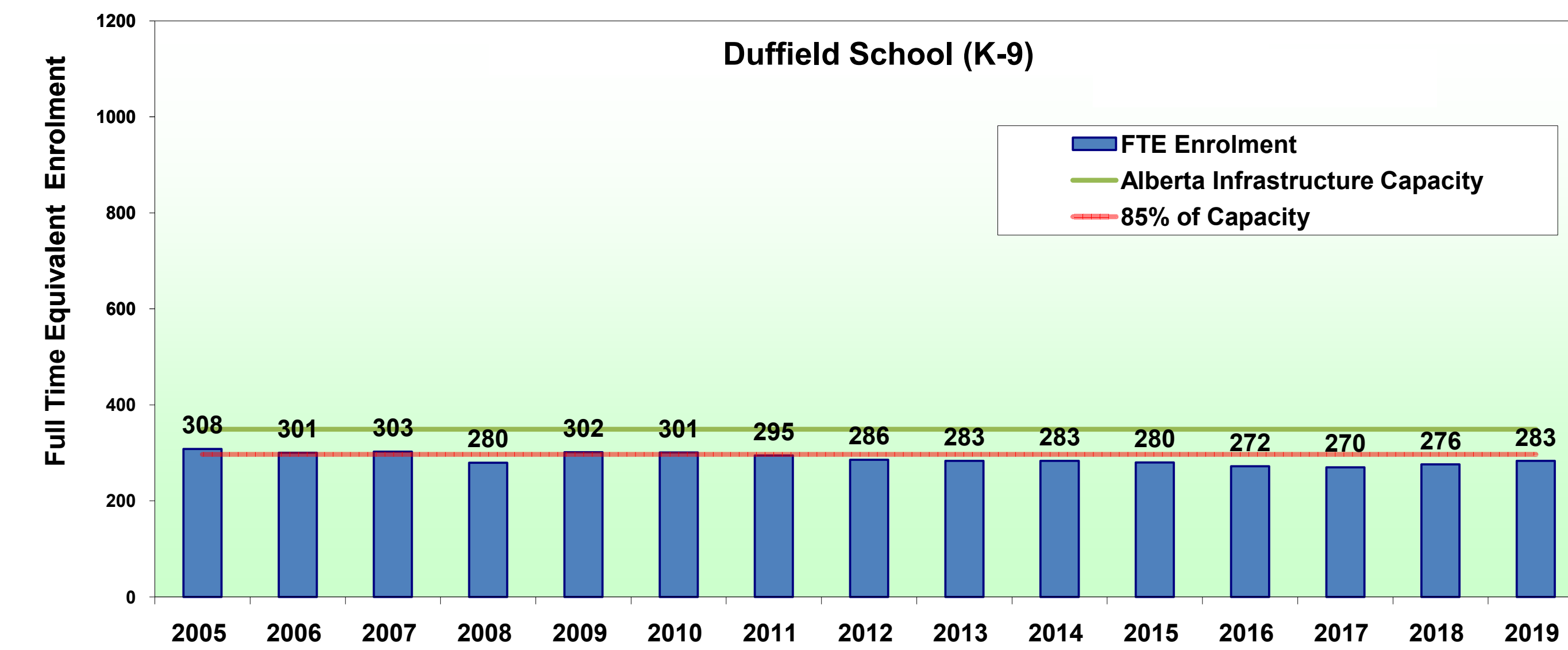
4 Core Portables

Constraint
- Physical area of the site has been filled



West Parkland Zone - Duffield School

GRADE	2005	2006	2007	2008	2009	2010	2011	2012	2013	2014	2015	2016	2017	2018	2019
FTE Enrolment	308	301	303	280	302	301	295	286	283	283	280	272	270	276	283
Net Capacity	349	349	349	349	349	349	349	349	349	349	349	349	349	349	349
85% Capacity	297	297	297	297	297	297	297	297	297	297	297	297	297	297	297



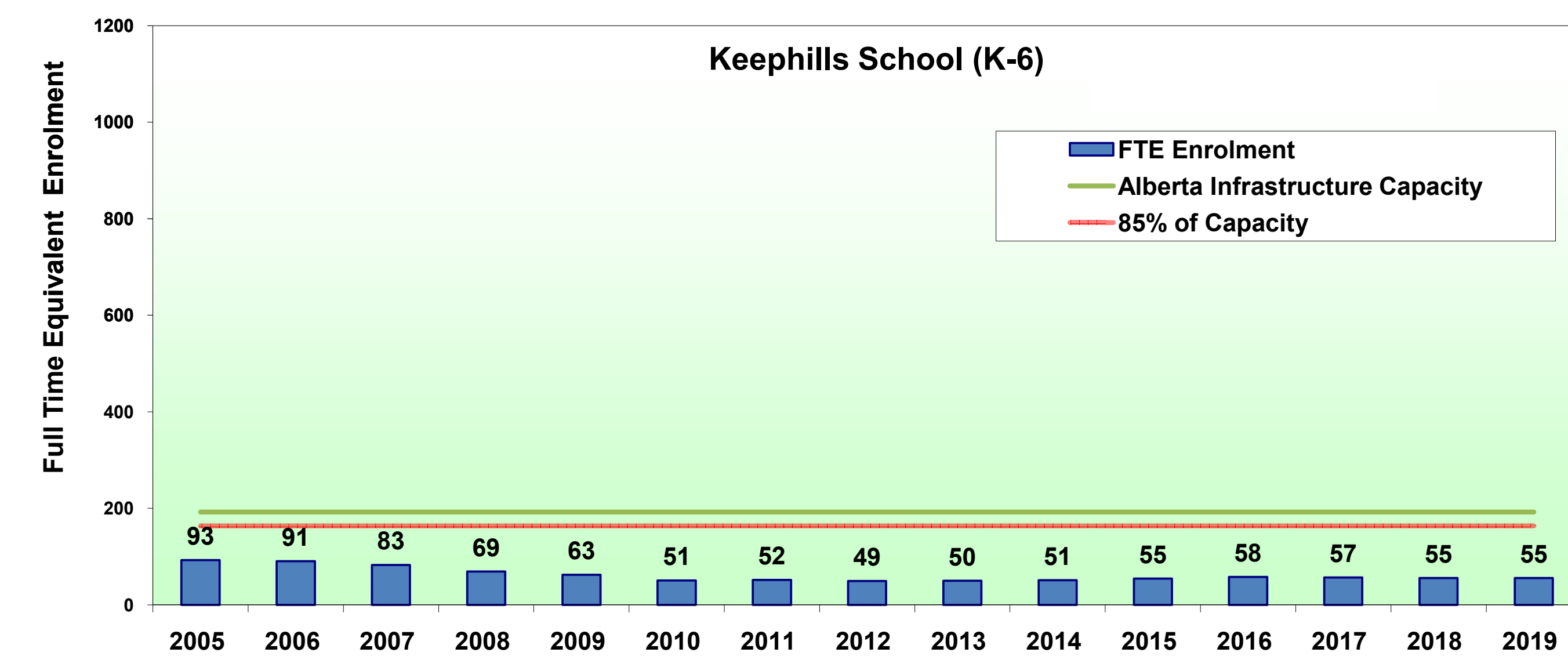
Notes:
- Enrolment projections March 2010 updated with September 30, 2010 cohort movement
- Capacity includes December 2010 core portable movements
- Capacity explanation in handout

West Parkland Zone - Keephills School



West Parkland Zone - Keephills School

GRADE	2005	2006	2007	2008	2009	2010	2011	2012	2013	2014	2015	2016	2017	2018	2019
FTE Enrolment	93	91	83	69	63	51	52	49	50	51	55	58	57	55	55
Net Capacity	193	193	193	193	193	193	193	193	193	193	193	193	193	193	193
85% Capacity	164	164	164	164	164	164	164	164	164	164	164	164	164	164	164



Notes:
- Enrolment projections March 2010 updated with September 30, 2010 cohort movement
- Capacity includes December 2010 core portable movements
- Capacity explanation in handout