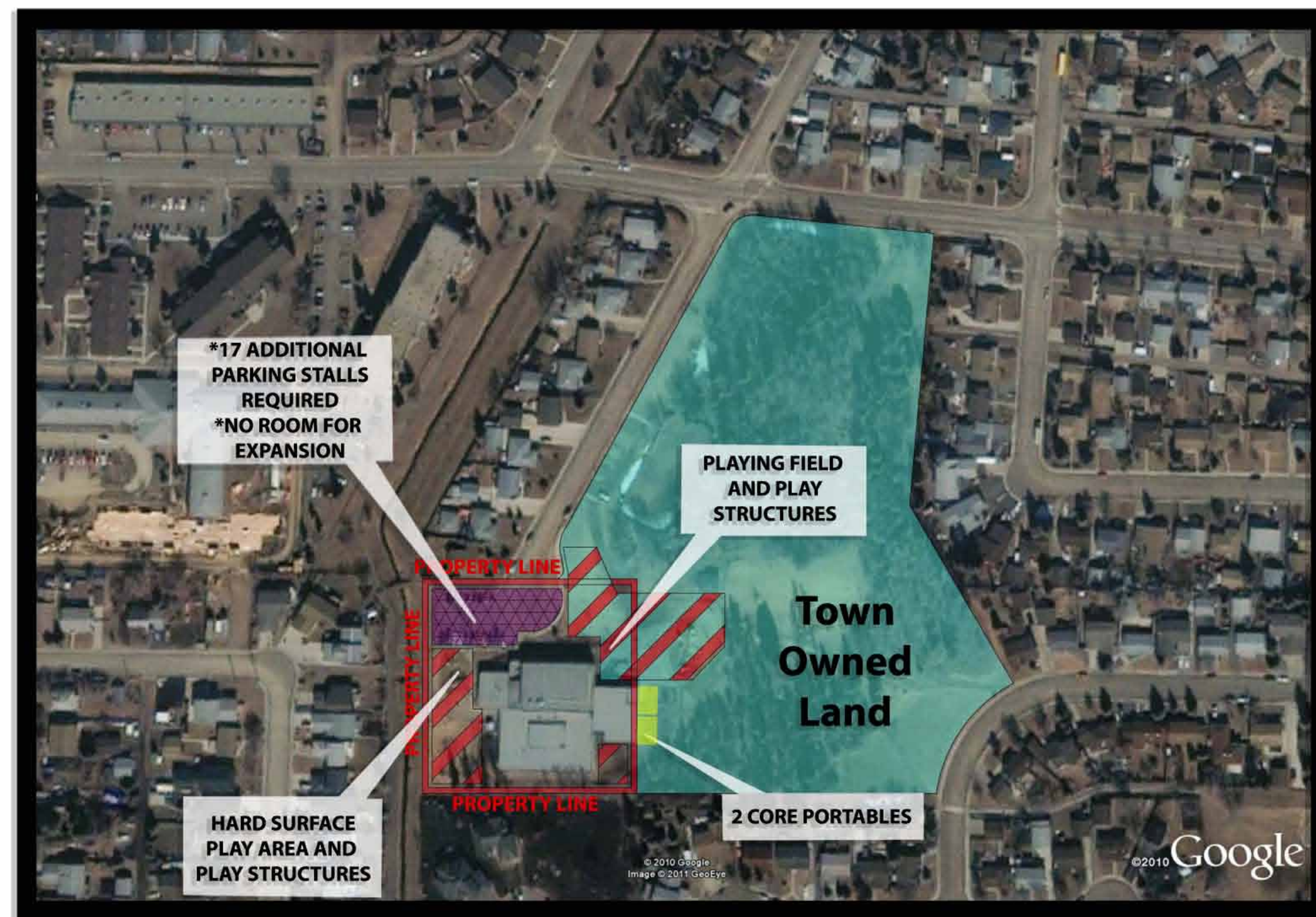


SYSTEM REVIEW

Stony Plain Zone - Forest Green School



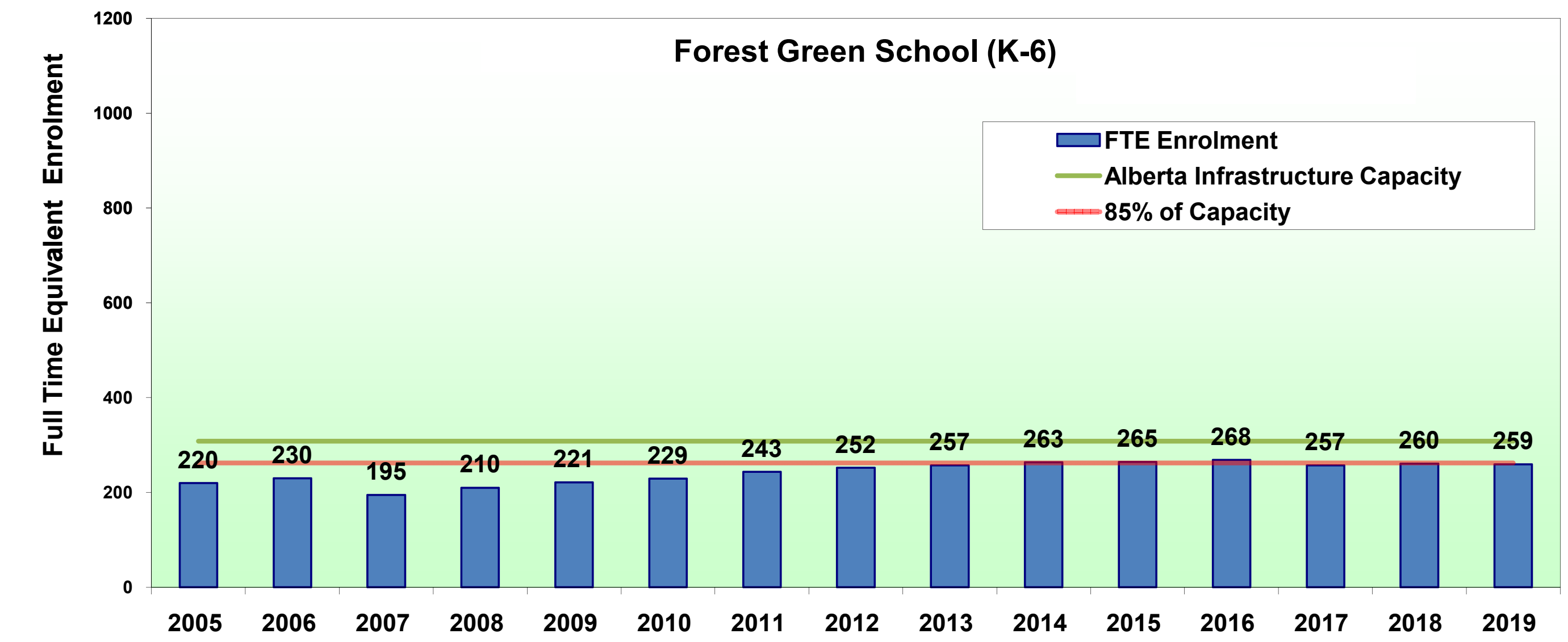
2 Core Portables
Constraint
 - Physical area of the site has been filled



Forest Green School

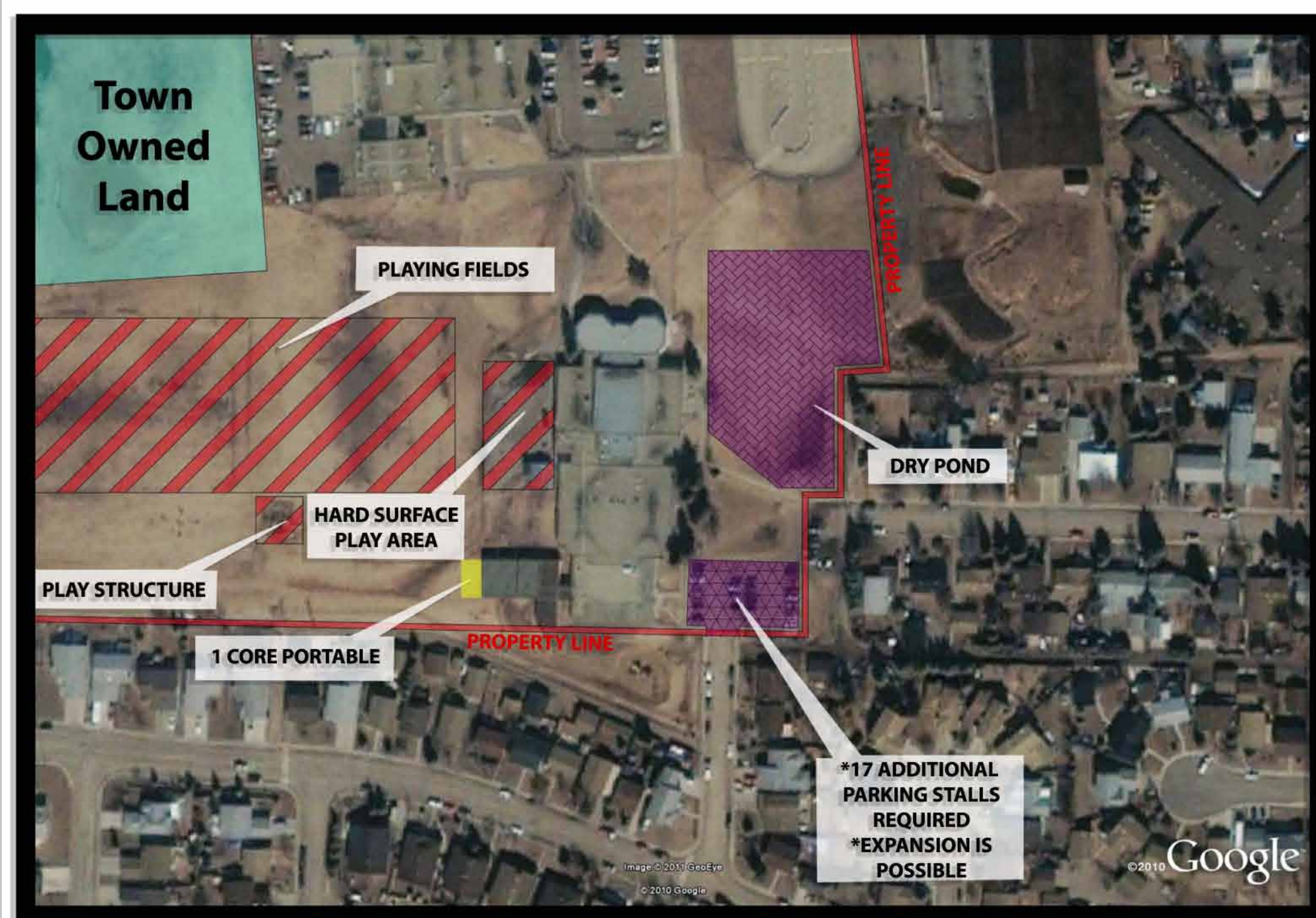
Stony Plain Zone - Forest Green School

GRADE	2005	2006	2007	2008	2009	2010	2011	2012	2013	2014	2015	2016	2017	2018	2019
FTE Enrolment	220	230	195	210	221	229	243	252	257	263	265	268	257	260	259
Net Capacity	308	308	308	308	308	308	308	308	308	308	308	308	308	308	308
85% Capacity	262	262	262	262	262	262	262	262	262	262	262	262	262	262	262



Notes:
 - Enrolment projections March 2010 updated with September 30, 2010 cohort movement
 - Capacity includes December 2010 core portable movements
 - Capacity explanation in handout

Stony Plain Zone - Stony Plain Central School



1 Core Portable
Constraint
 - Number of existing washroom fixtures

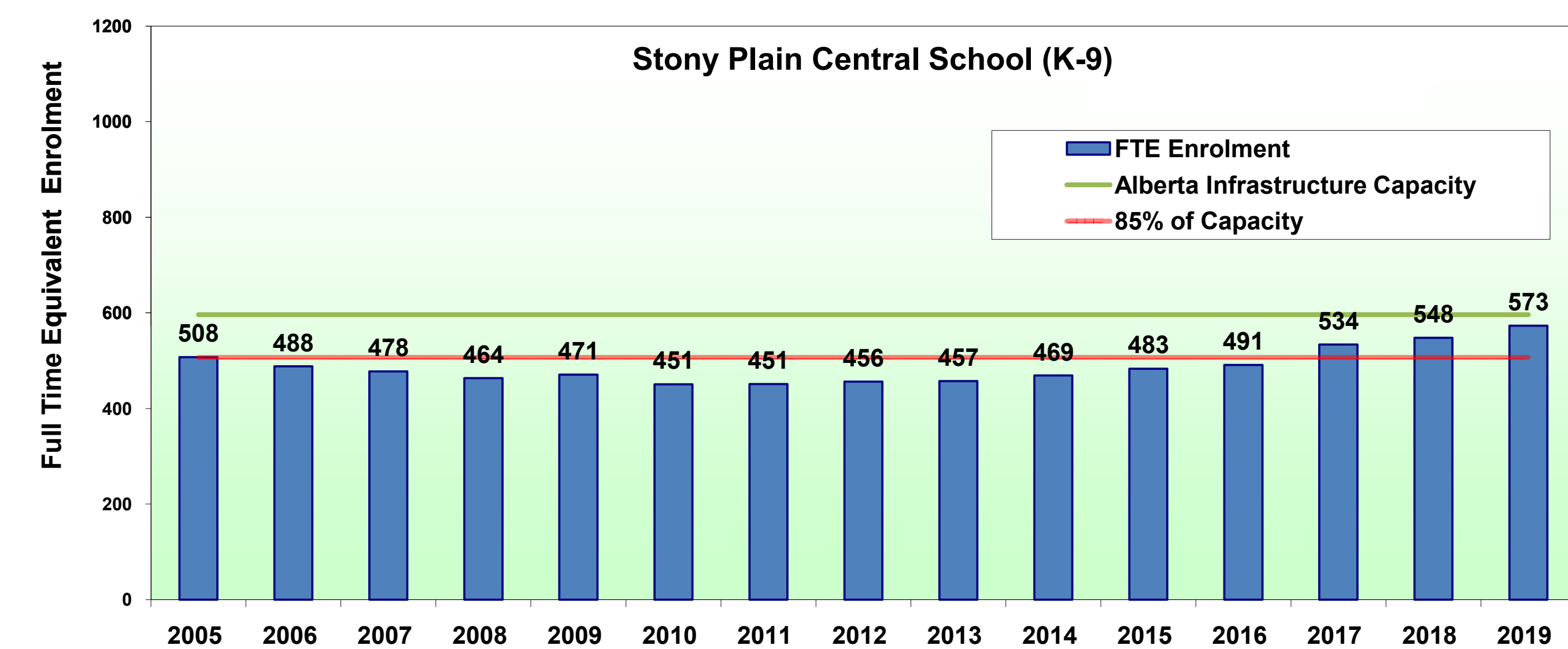
Consequences of Expansion
 - Gymnasium is undersized for school population



Stony Plain Central School

Stony Plain Zone - Stony Plain Central School

GRADE	2005	2006	2007	2008	2009	2010	2011	2012	2013	2014	2015	2016	2017	2018	2019
FTE Enrolment	508	488	478	464	471	451	451	456	457	469	483	491	534	548	573
Net Capacity	596	596	596	596	596	596	596	596	596	596	596	596	596	596	596
85% Capacity	507	507	507	507	507	507	507	507	507	507	507	507	507	507	507



Notes:
 - Enrolment projections March 2010 updated with September 30, 2010 cohort movement
 - Capacity includes December 2010 core portable movements
 - Capacity explanation in handout