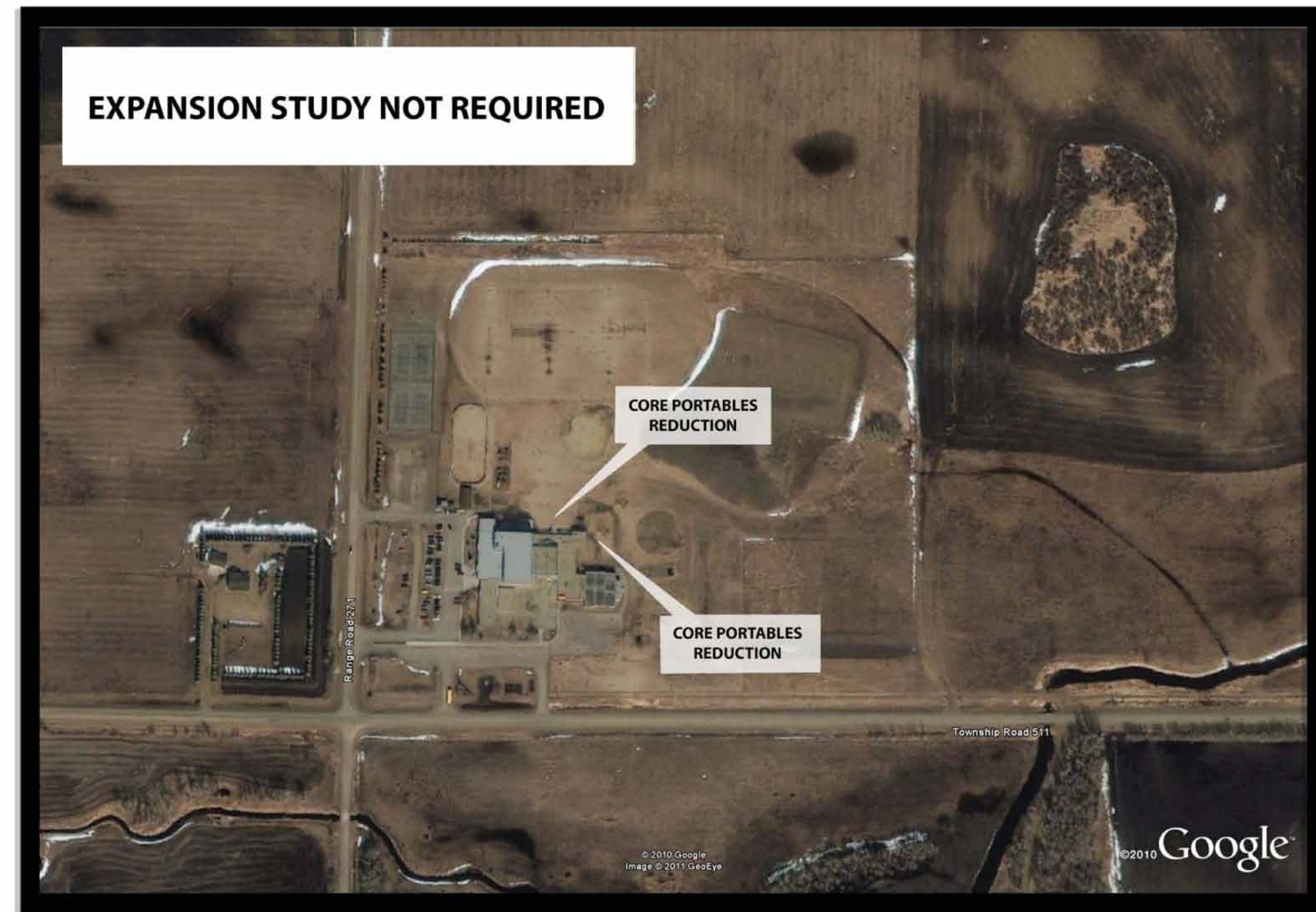


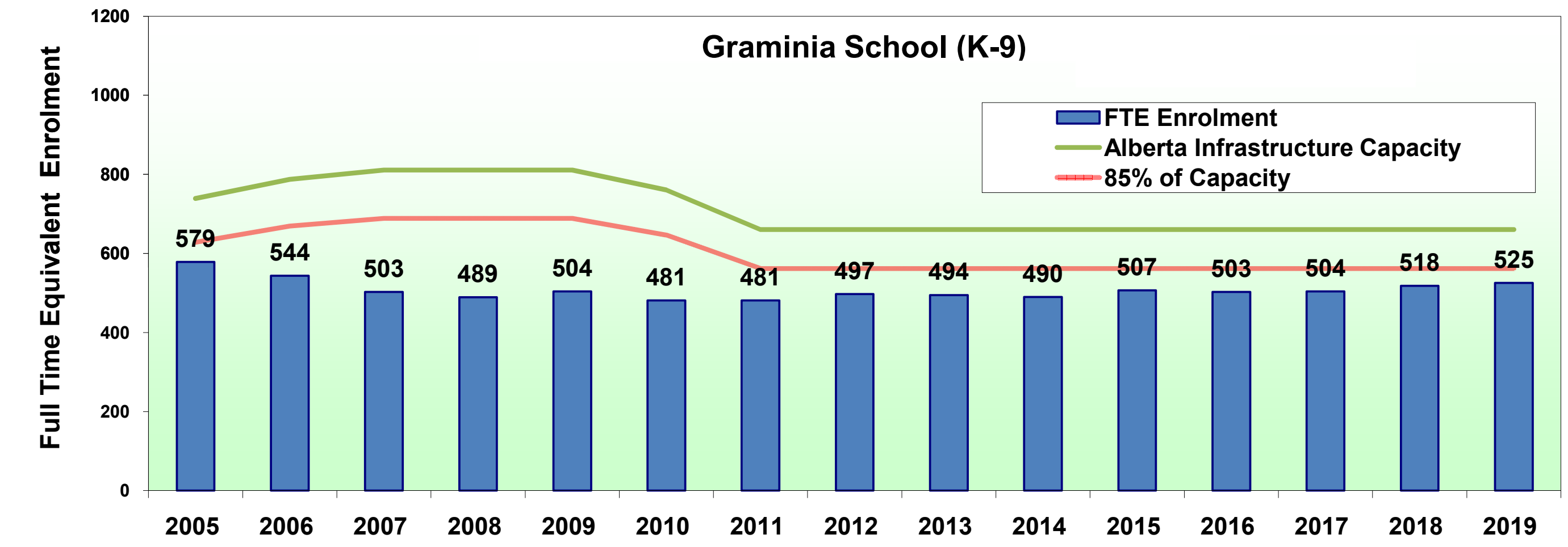
## Spruce Grove Zone - Graminia School



**Graminia School**

## Spruce Grove Zone - Graminia School

GRADE	2005	2006	2007	2008	2009	2010	2011	2012	2013	2014	2015	2016	2017	2018	2019
FTE Enrolment	579	544	503	489	504	481	481	497	494	490	507	503	504	518	525
Net Capacity	739	787	811	811	811	761	661	661	661	661	661	661	661	661	661
85% Capacity	628	669	689	689	689	646	561	561	561	561	561	561	561	561	561



Notes:  
 - Enrolment projections March 2010 updated with September 30, 2010 cohort movement  
 - Capacity includes December 2010 core portable movements  
 - Capacity explanation in handout