

# SYSTEM REVIEW

## Spruce Grove Zone - Parkland Village School

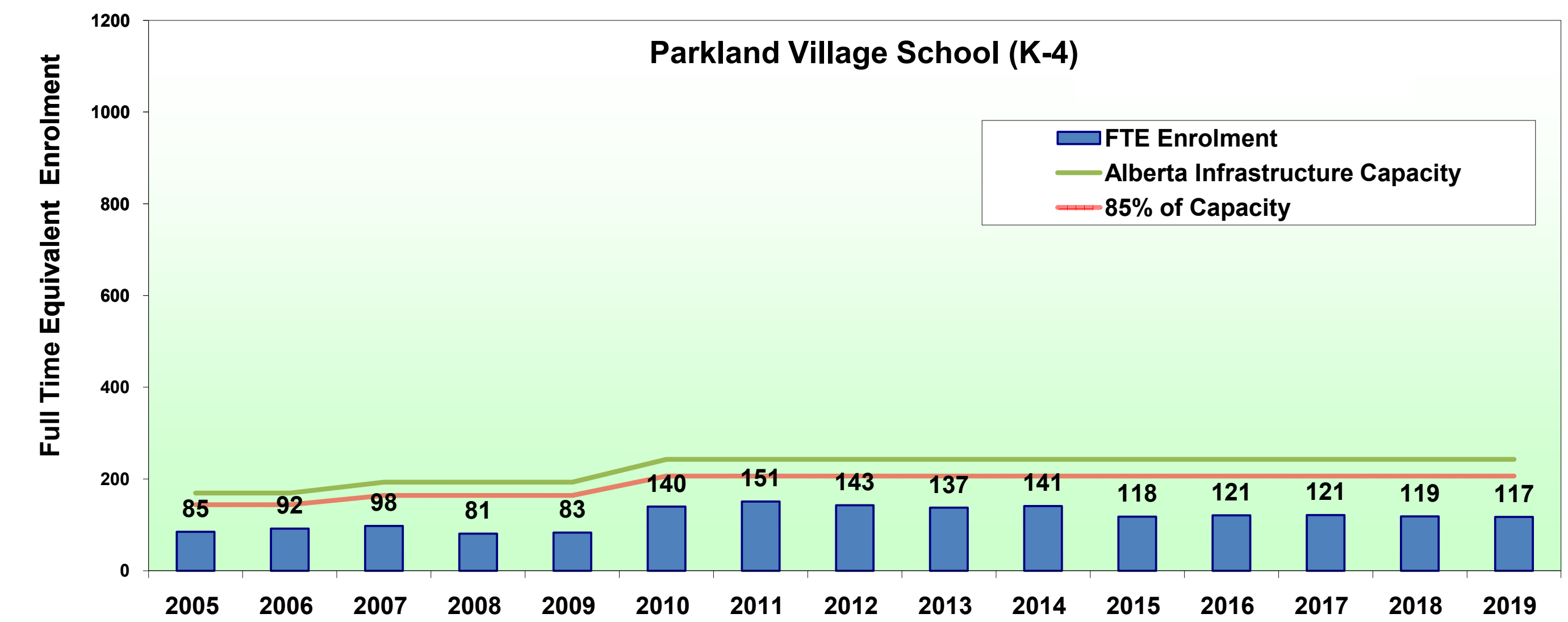


**1 Core Portable**  
**Constraint**  
 - Number of existing washroom fixtures

**Parkland Village School**

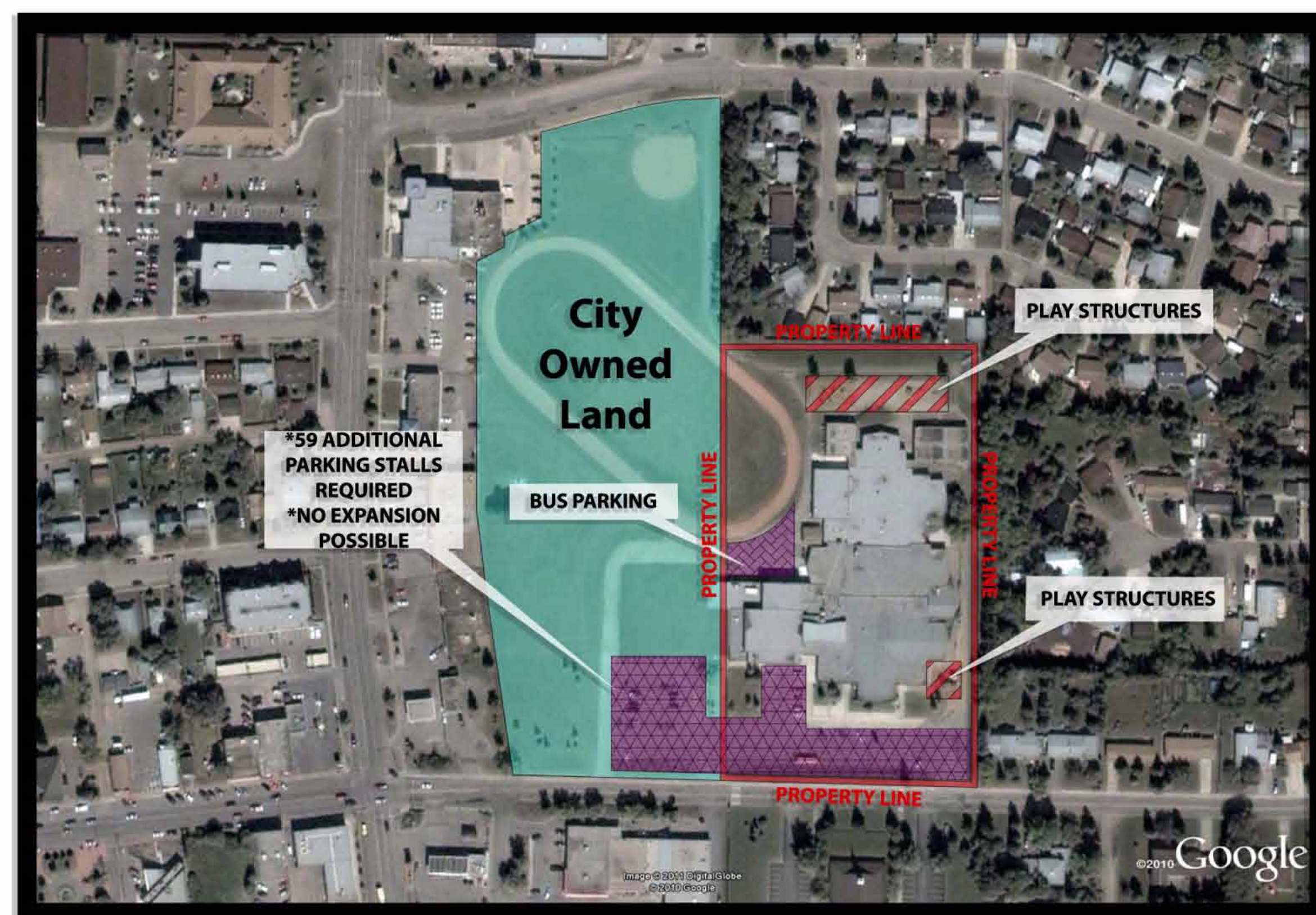
## Spruce Grove Zone - Parkland Village School

GRADE	2005	2006	2007	2008	2009	2010	2011	2012	2013	2014	2015	2016	2017	2018	2019
FTE Enrolment	85	92	98	81	83	140	151	143	137	141	118	121	121	119	117
Net Capacity	169	169	193	193	193	243	243	243	243	243	243	243	243	243	243
85% Capacity	144	144	164	164	164	207	207	207	207	207	207	207	207	207	207



**Notes:**  
 - Enrolment projections March 2010 updated with September 30, 2010 cohort movement  
 - Capacity includes December 2010 core portable movements  
 - Capacity explanation in handout

## Spruce Grove Zone - Ecole Broxton Park School

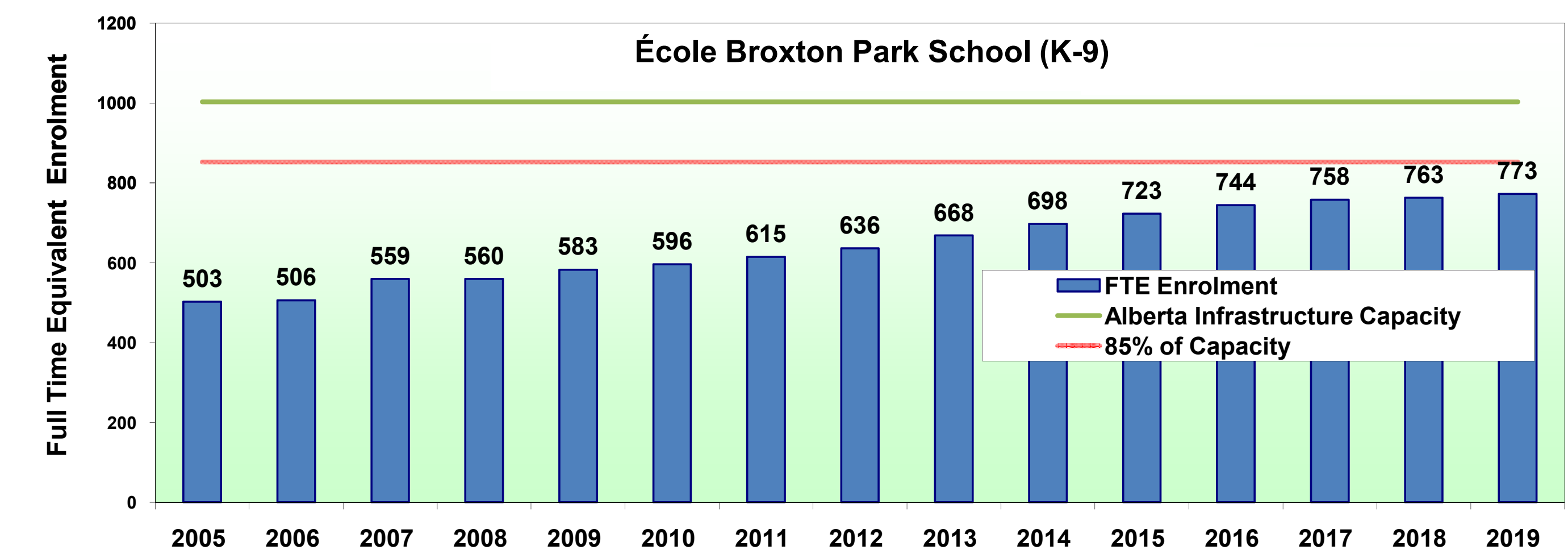


**0 Core Portables**  
**Constraint**  
 - Physical area of the site has been filled

**École Broxton Park School**

## Spruce Grove Zone - Ecole Broxton Park School

GRADE	2005	2006	2007	2008	2009	2010	2011	2012	2013	2014	2015	2016	2017	2018	2019
FTE Enrolment	503	506	559	560	583	596	615	636	668	698	723	744	758	763	773
Net Capacity	1003	1003	1003	1003	1003	1003	1003	1003	1003	1003	1003	1003	1003	1003	1003
85% Capacity	853	853	853	853	853	853	853	853	853	853	853	853	853	853	853



**Notes:**  
 - Enrolment projections March 2010 updated with September 30, 2010 cohort movement  
 - Capacity includes December 2010 core portable movements  
 - Capacity explanation in handout