

# System Review

## November 8, 2011





# System Review

## Spring 2011

### **Moving Forward... Beyond the Immediate Priorities**

In response to the collected data and stakeholder input, the Board is considering for review beyond September 2011:

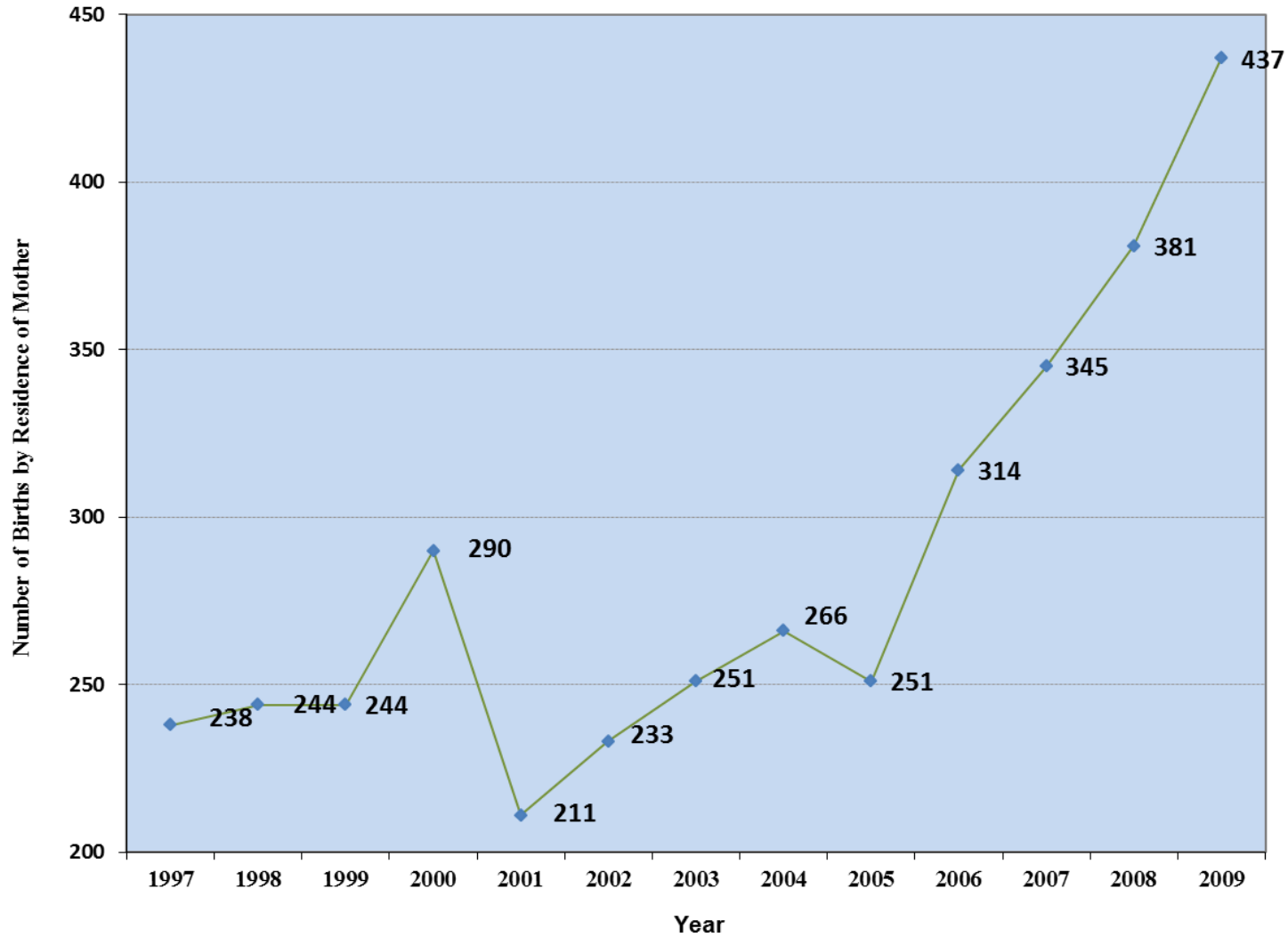
- \* • **The additional space at École Broxton Park School serving Spruce Grove Kindergarten students for September 2012**
- The relationship between Forest Green School and Stony Plain Central School and if the current grade arrangement is suitable
- The boundary of École Meridian Heights School and the desire to ensure a viable English and French Immersion program
- The development of co-terminus boundaries for existing schools and future schools built
- The relationship between West Parkland Schools and if the current grade arrangement is suitable
- The rural boundaries for West Parkland and Stony Plain area
- The student enrolment and capacity within existing high schools
- \* • **The Capital Plan submission for new school construction in Spruce Grove and consideration of what grade configuration is desirable (i.e. K-9, K-4, 5-9)**



# System Review

## Spruce Grove Births

City of Spruce Grove  
Historical Births by Year



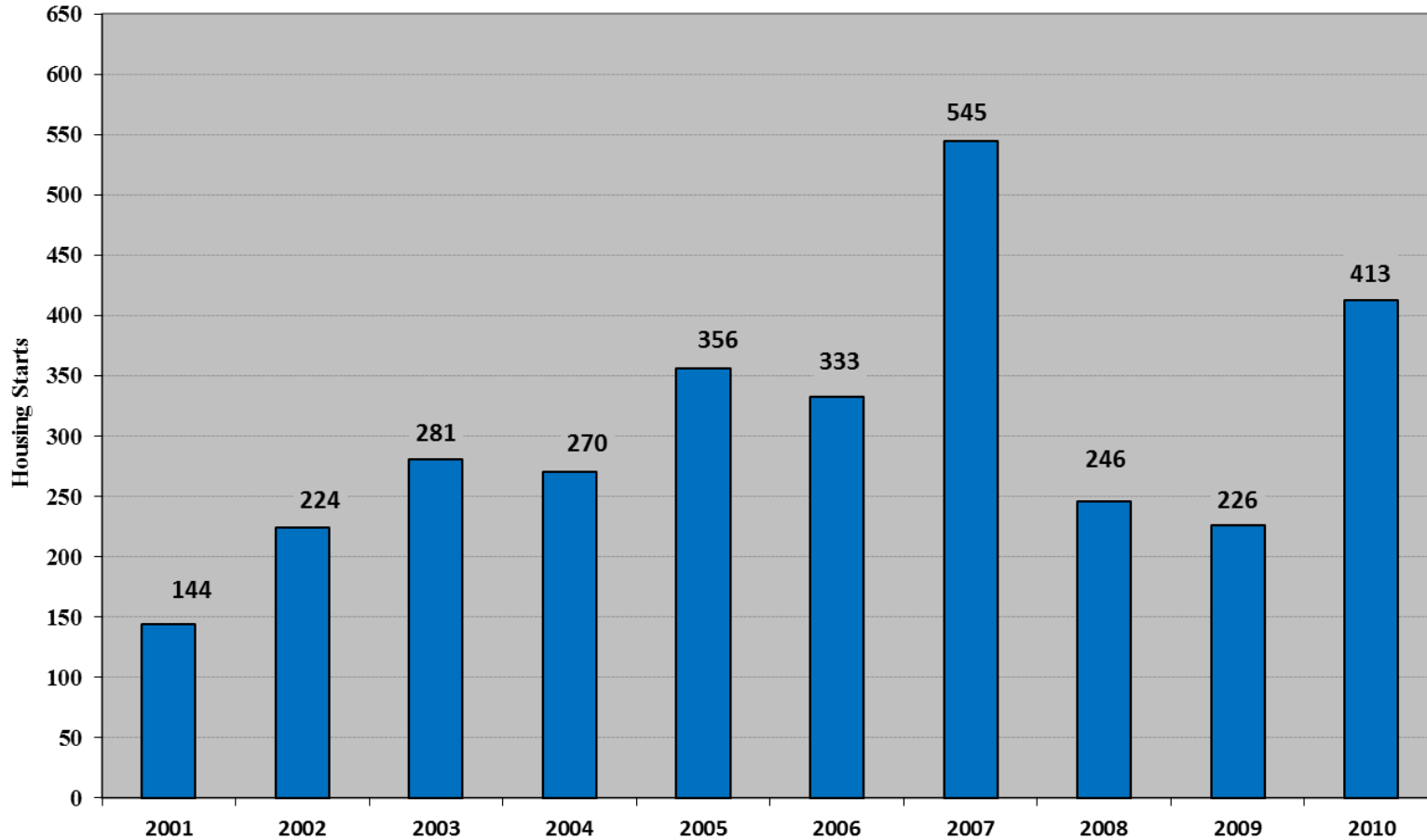
Source: Alberta Vital Statistics



# System Review

## Spruce Grove Housing Starts

City of Spruce Grove  
Historical Single Family and Duplex Housing Starts



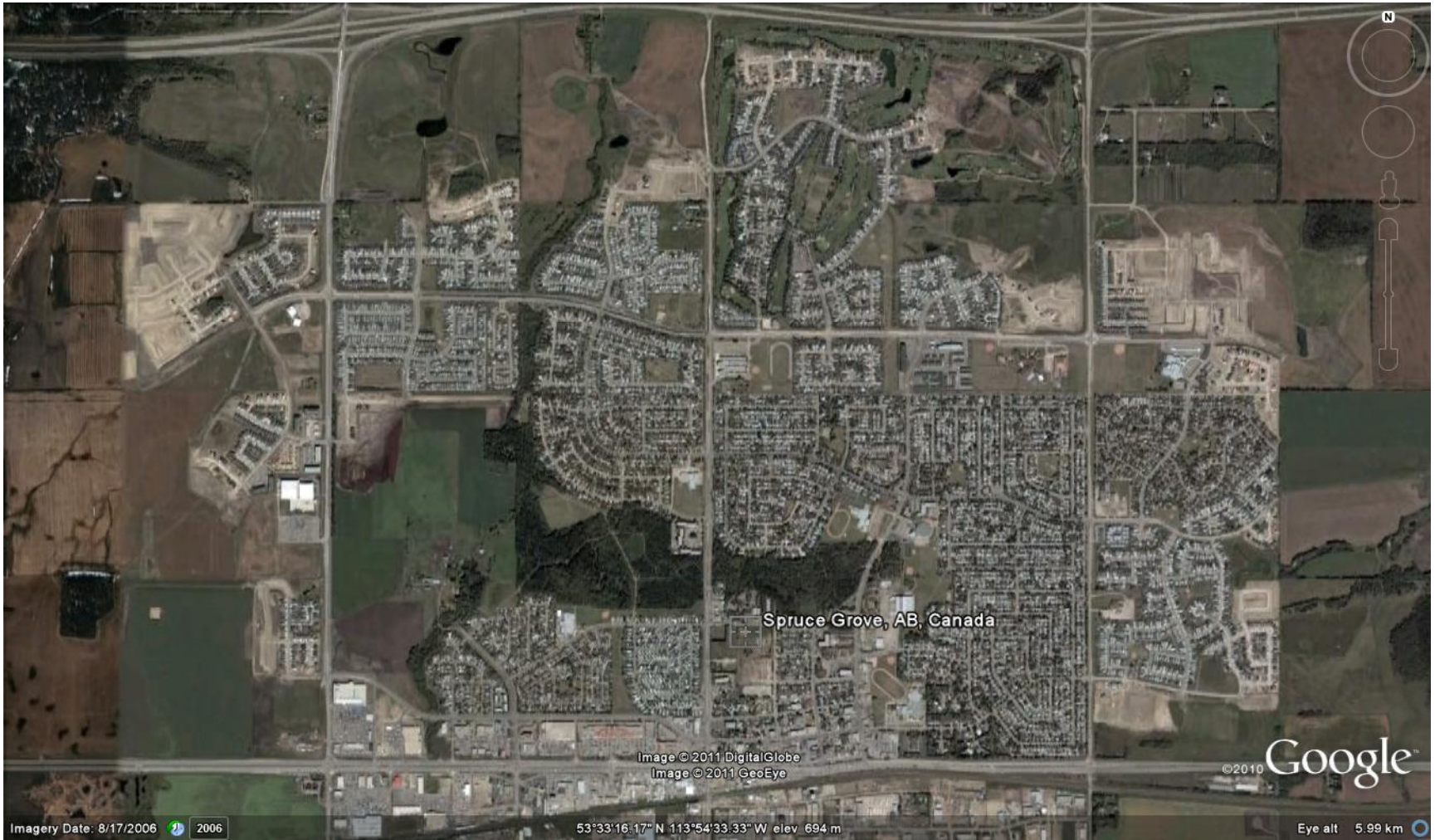
Source: Canada Mortgage and  
Housing Corporation

Year



# System Review

## Spruce Grove Development Areas





# System Review

## Spruce Grove Early Years

### Goals

To develop a plan to adequately accommodate projected Spruce Grove Kindergarten to grade 4 enrolments for September 2012 and for the foreseeable future.

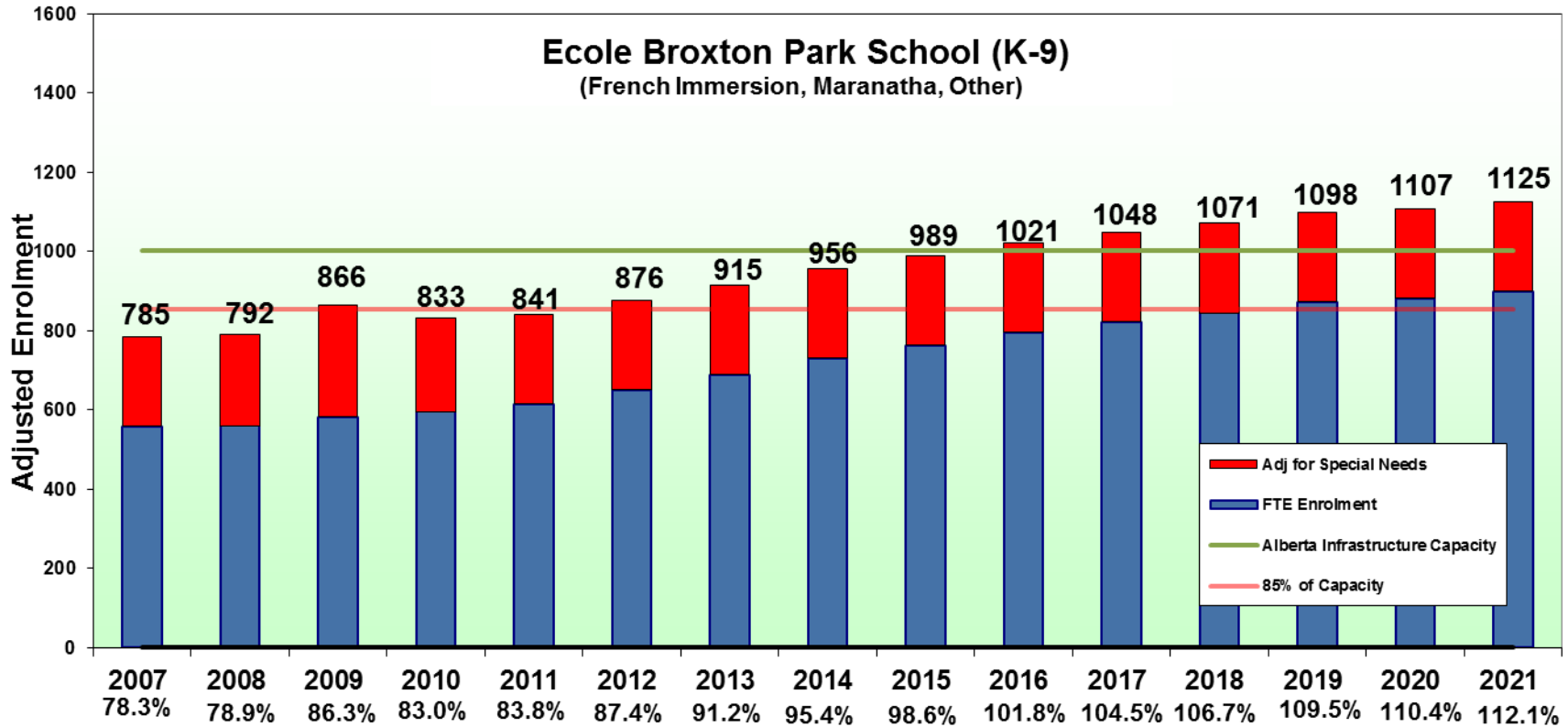
### Planning Principles / Evaluation Criteria

- Anticipated community support.
- Manage projected over capacity in schools that have a limited potential to accommodate growth.
- Minimize disruptions to programming for existing students.
- Minimize facility and site capital costs.
- Maximize the potential to secure funding for new school.
- Adequately accommodate projected Spruce Grove Kindergarten to grade 4 enrolments for September 2012 and for the foreseeable future.



# System Review

## Ecole Broxton Park – Total Enrolment Projections – Capacity and Utilization

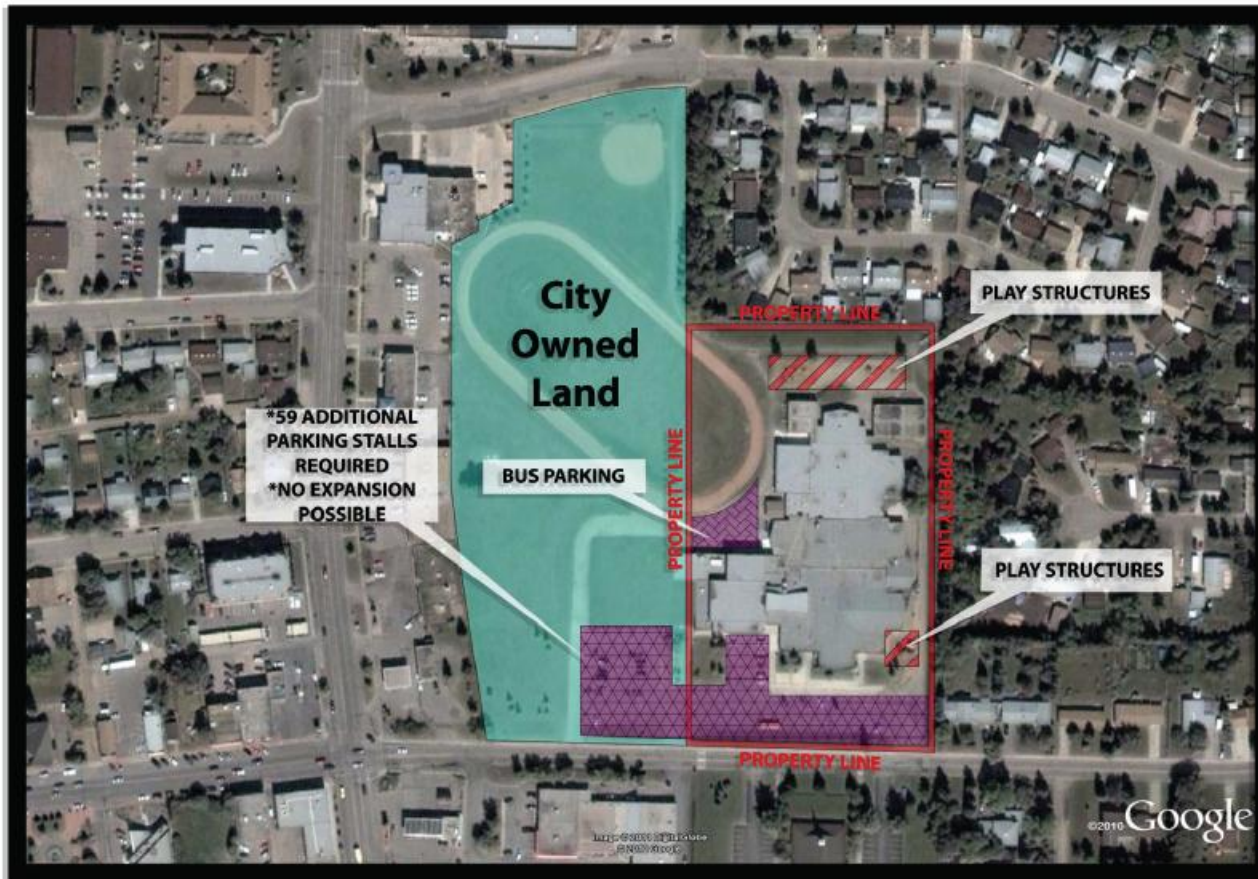


**Notes:**

- Enrolment projections October 18 2011
- Capacity includes December 2010 core portable movements
- % indicates Utilization Rate of Building

# System Review

## Ecole Broxton Park – Facility and Site



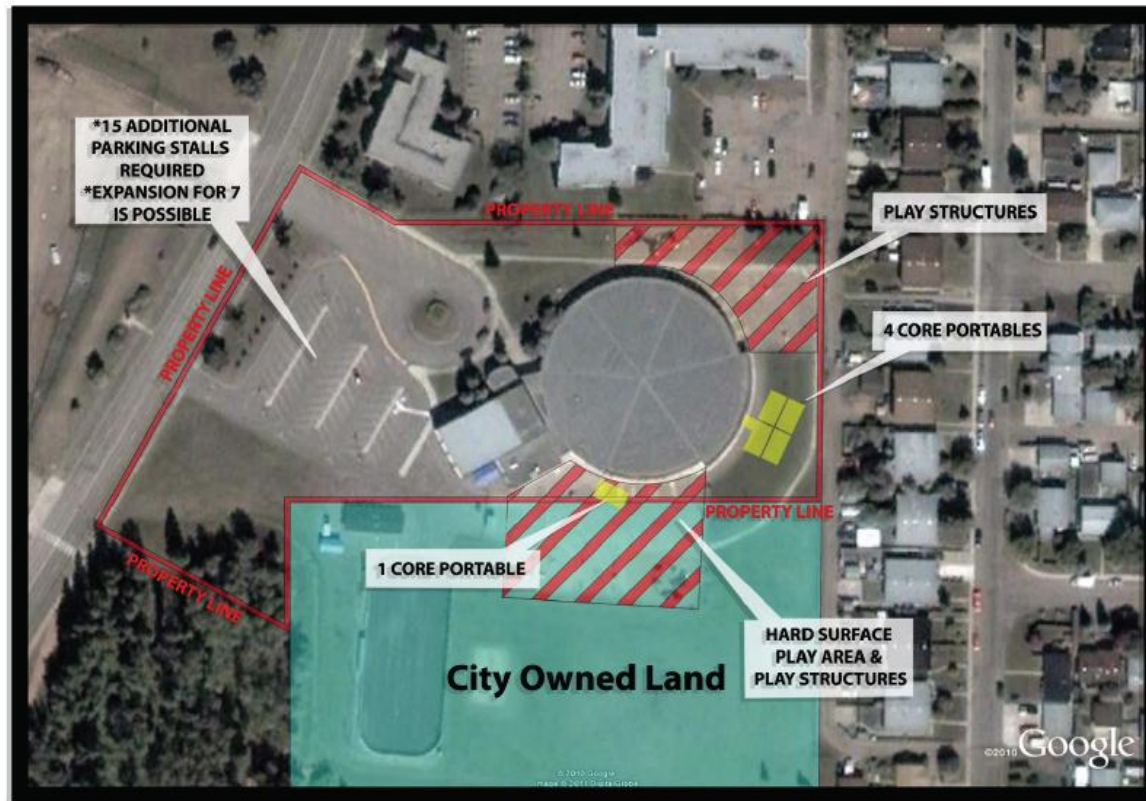
- Growing French Immersion enrolment.
- Site and facility renovation costs estimated at \$750,000 to \$1,000,000 in order to accommodate 13 to 14 Kindergarten classes from Millgrove and Brookwood.
- Site modifications to accommodate additional busses would require use of City land and agreement from City.



**École Broxton Park School**



# System Review – Spruce Grove Early Years Brookwood – Facility and Site Capacity



- It is possible to add 2 to 3 classes to Brookwood through interior modifications.
- It is possible to add up to 5 core portables as needed.



**Brookwood School**



# System Review – Spruce Grove Early Years Millgrove – Facility and Site Capacity



- It is possible to add 2 to 3 classes to Millgrove through interior modifications.
- It is possible to add up to 2 core portables as needed.



**Millgrove School**



# System Review

## Spruce Grove New School – Grade Configuration and Size

### Goals

To determine the appropriate size and grade configuration of proposed new school in Spruce Grove.

### Planning Principles / Evaluation Criteria

- Maintain and create optimum enrolments and educational programs.
- Reduce overcrowding in schools that have a limited potential to accommodate growth.
- Enable co-terminus arrangements.
- Adequately accommodate projected Spruce Grove Kindergarten to grade 9 enrolments for 2016.
- Availability of an appropriately located and sized Reserve site.
- Potential for a community partner in a joint use facility.



# System Review

## Spruce Grove New School – Grade Configuration and Size

Alberta Schools Alternative Procurement (ASAP) is a new approach to build schools in Alberta. The Government of Alberta is undertaking two ASAP schools projects that will result in 32 new schools for the Edmonton Capital and Calgary regions.

The projects are being delivered through a Public Private Partnership (P3) model. P3 involves a contract between the Government of and a private consortium, in which the consortium finances and builds a number of school facilities.



# System Review

## Spruce Grove New School – Grade Configuration and Size

“School jurisdictions are encouraged to use these designs for developing new facilities, unless there are exceptional cases where cost savings can be demonstrated through other designs or if the nature of the school project is such that it requires facilities beyond the scope possible through these designs.

The following designs have been completed:”

Standard Core School Type	Permanent Core Area	Initial Capacity	Modular Classrooms	Built-Out Area
K to 6 – 300 Capacity	1,718 m2	100	8	2,518 m2
K to 6 – 450 Capacity	2,704 m2	150	12	3,784 m2
K to 6 – 600 Capacity	3,323 m2	300	12	4,618 m2
K to 9 – 600 Capacity	3,509 m2	200	16	5,109 m2
<b>K to 9 – 900 Capacity</b>	<b>5,817 m2</b>	<b>500</b>	<b>16</b>	<b>7,417 m2</b>
5 to 9 – 600 Capacity	4,247 m2	300	12	5,447 m2
5 to 9 – 900 Capacity	6,337 m2	500	16	7,937 m2

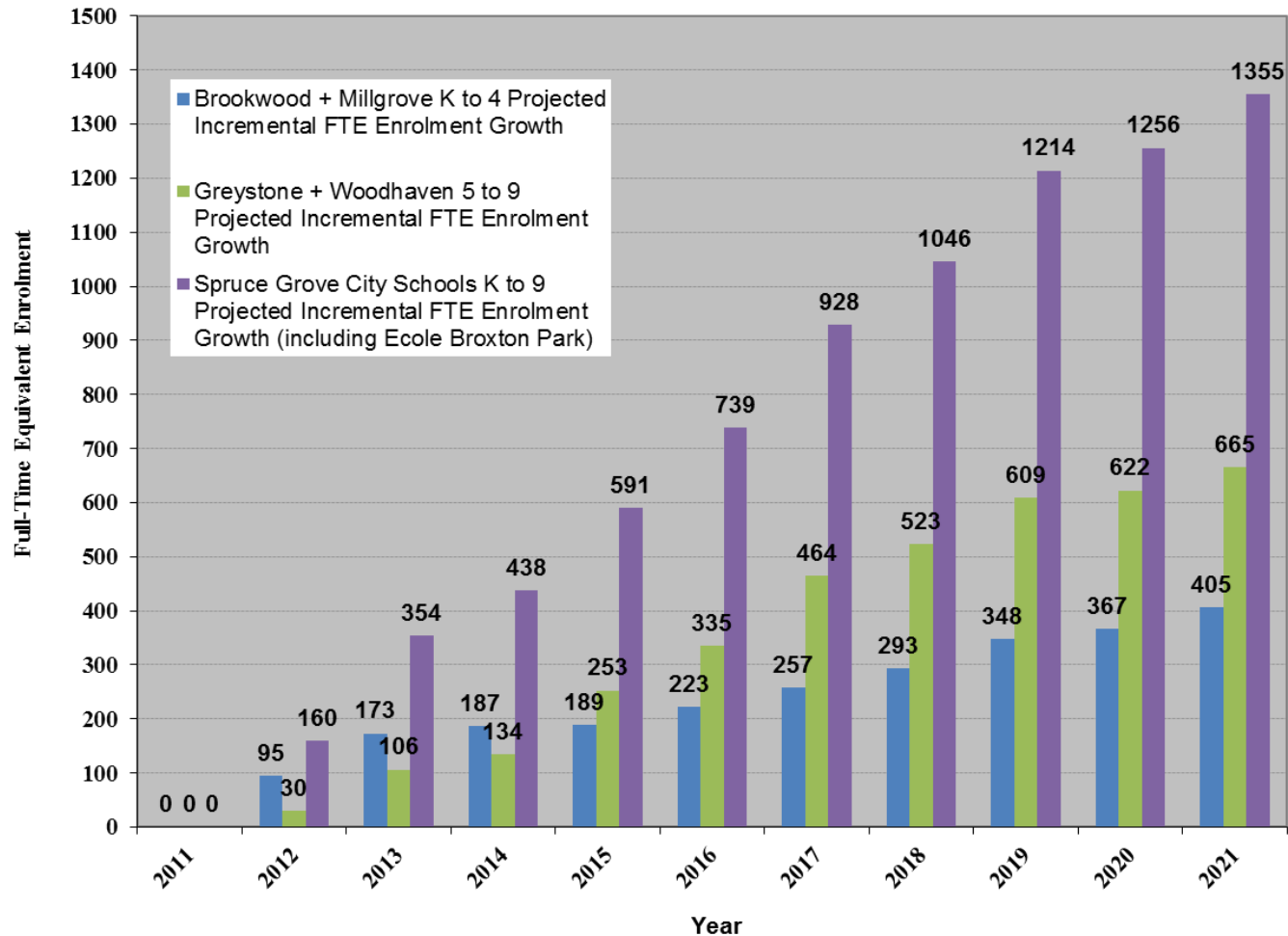
Source: Alberta Education – School Capital Manual



# System Review

## Projected Incremental Enrolment Growth

Spruce Grove City Schools Projected Incremental Enrolment Growth by Grade Type





# System Review

## Projected Incremental Number of Classes

Spruce Grove City Schools Projected Number of Classes Incremental Growth by Grade Type

